

TOWNHOME A

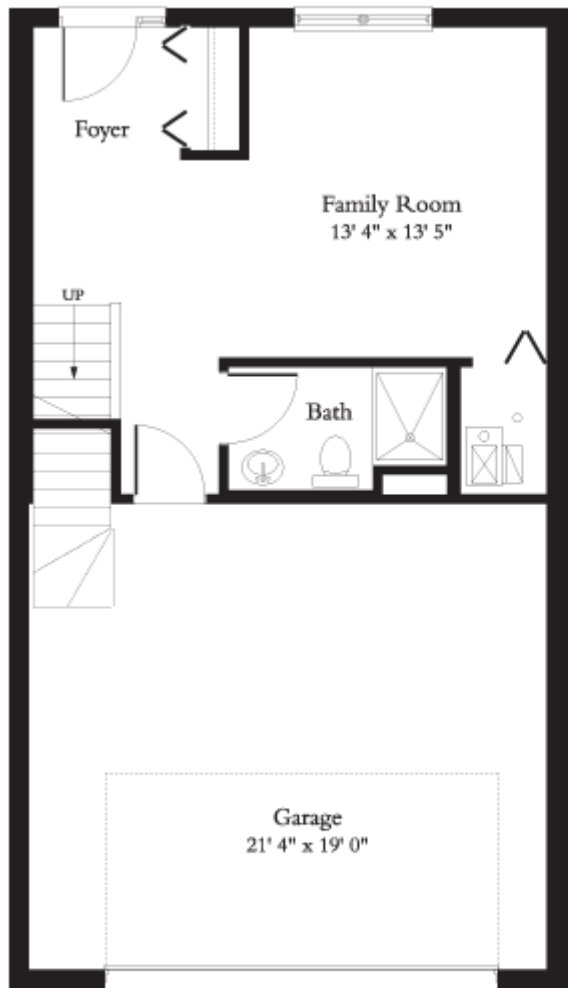
3 BEDROOMS / 3.5 BATHS

2,903 – 2,978 Sq. Ft.

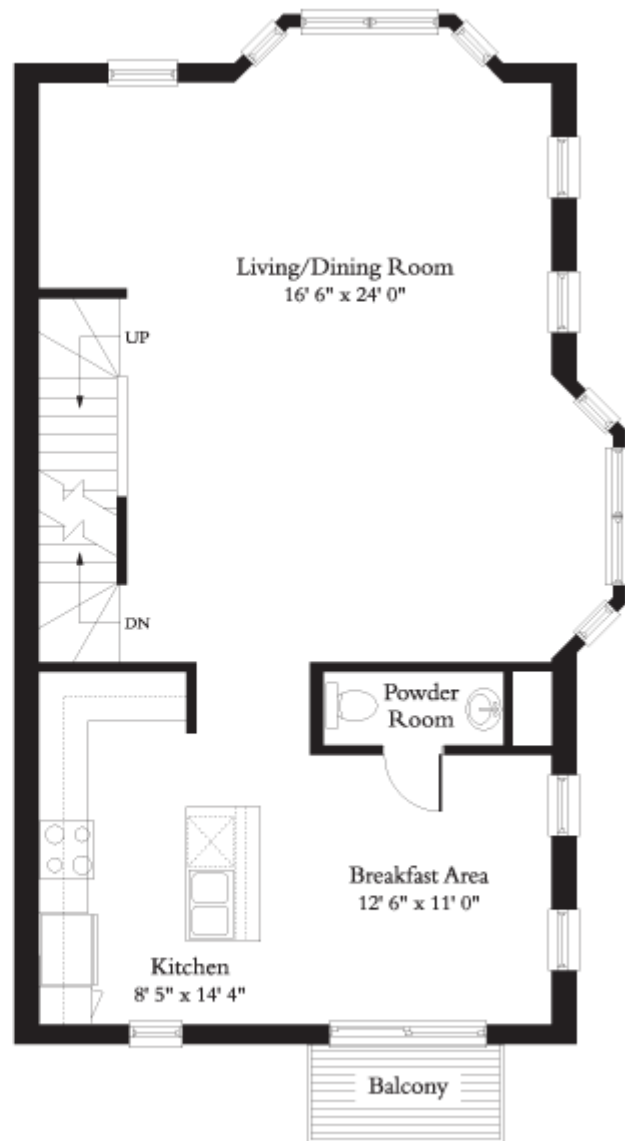
\$790,900 – \$810,900

PRINT 

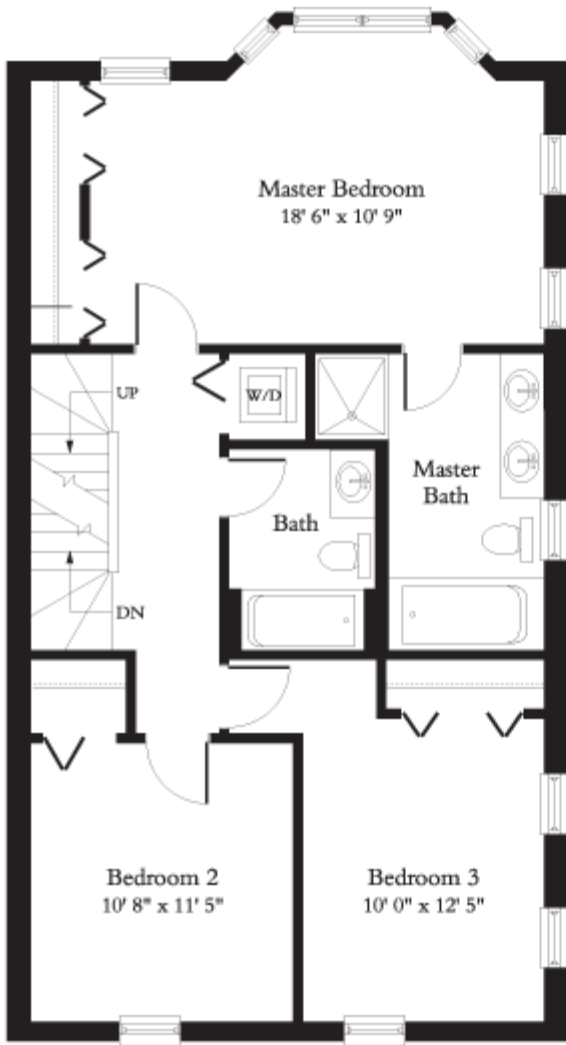
CLOSE WINDOW 



FIRST FLOOR



SECOND FLOOR



THIRD FLOOR



PENTHOUSE

Ivy Hall's policy of continual attention to design and construction requires that all specific designs, specifications, features, amenities and materials are subject to change without notice. Topographic depictions are for conceptual purposes only



based on current development plans which are subject to change without notice. All dimensions are approximate and may vary depending on residence selected. Depict floor plans, landscaping and exterior styling are only an artist's interpretation